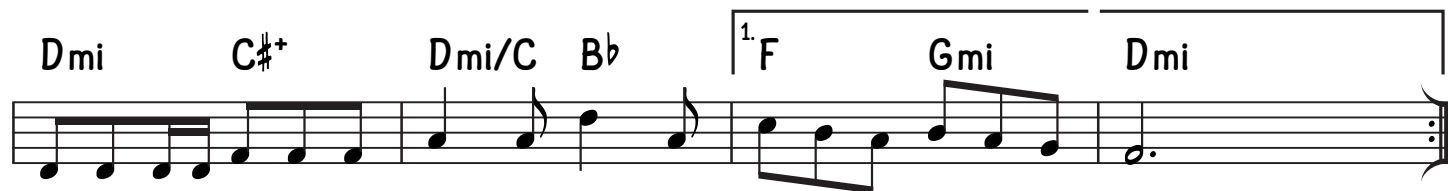
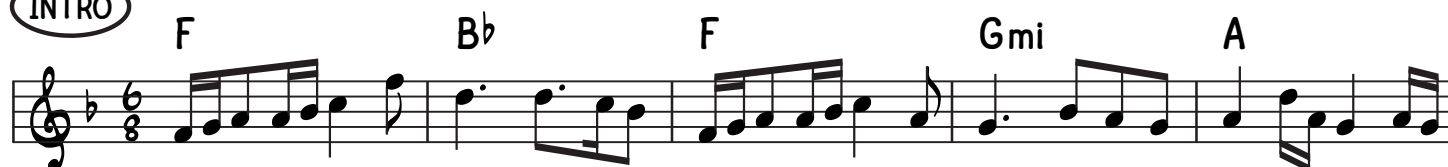


♩.=64

Horachamon

INTRO



Contd/...



Chord progression for the second system of the piece:

C (C major): F, Dmi, F, Dmi, Dmi, Gmi, Gmi, Cmi, D⁷, Gmi, Gmi, Gmi, B^b, Dmi.

D (D major): Dmi, Dmi, Dmi, Dmi, Dmi, C^{#+}, Dmi/C, B^b, 1. F, Gmi, Dmi, 2. F, Gmi, A⁷, Dmi.

E (E major): Dmi, B^b, F, Gmi, Dmi, Dmi, Gmi, Dmi, E^ø, A⁷, Dmi, 1. A, 2. Dmi.

