

B"H

BALLAD

Nafshi

Motty Steinmetz

INTRO

Fmi

Fmi⁷

D^b

E^b

B^bmi

Fmi



G

C

Fmi



Fmi

Cmi

Fmi

Cmi

B^bmi



Fmi

B^bmi

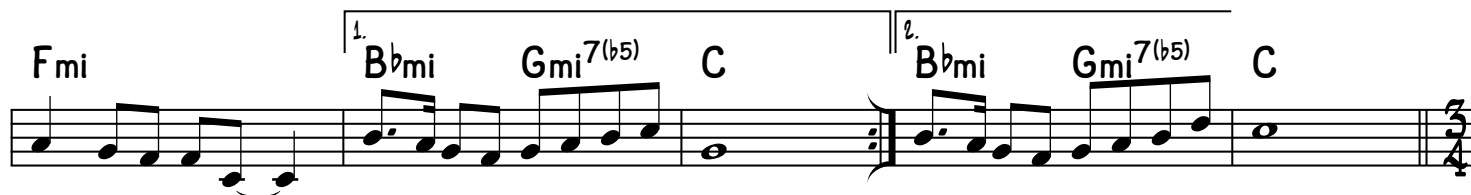
Gmi^{7(b5)}

C

B^bmi

Gmi^{7(b5)}

C



Fmi

Cmi

Fmi

Cmi



Gmi

Cmi

Gmi

Cmi

Cmi

