

Halayla Besimcha

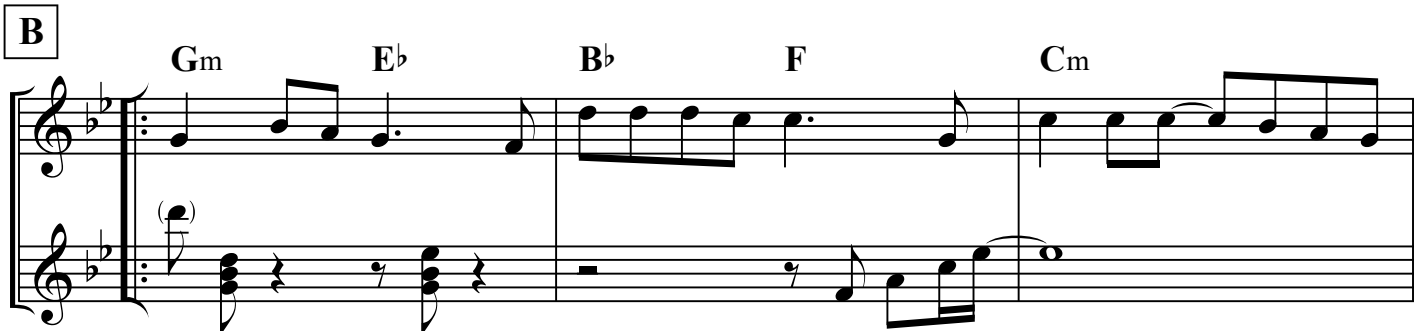
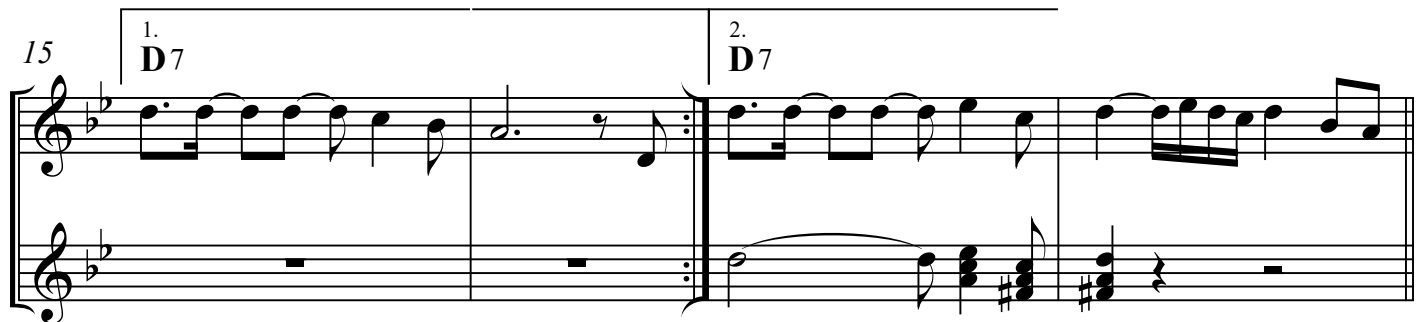
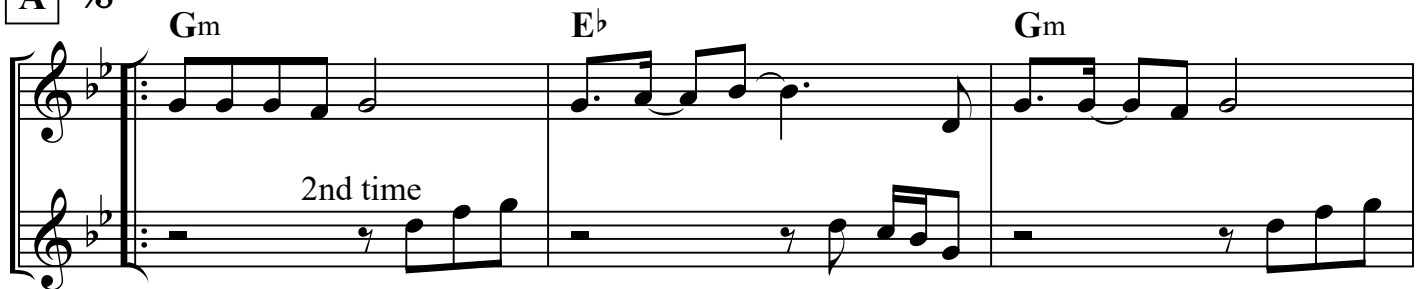
Yoeli Dikman

Pno

♩ = 120



A %



22 $E\flat$ $Dm7$ Gm $E\flat$ $B\flat$ F

25 1. Cm Dm Gm 2. Cm D Gm

C $B\flat$

33 Cm Unis. 1.

37 Unis. 2.

D.S.