



# Type B

4 Room | Apt.18

1194 Sq ft | 110 Sq ft balcony

- Prestigious residential buildings in a modern architectural design.
- Cladding part of the building with Jerusalem stone.
- Entrance door to the building with a color CCTV intercom system.
- Double high ceiling main lobby, combined with high-end finishing materials.
- 2 Elevators, at least one with Shabbat control.
- Stroller and bicycle room.
- Parking space for each apartment.

### The Apartment

- Designer front door designed according to the architect's choice.
- CCTV system (intercom) including a color touch screen at the entrance to the apartment.
- Mini central air conditioning system including plaster lowering (according to the planning of an air conditioning consultant).
- 80\*80 Porcelain Granit tiling from a selection of prestigious lines and in a variety of colors and sizes (except for wet rooms and balconies).
- Laminated parquet in the master bedroom.

### Doors and windows

- Aluminum windows with insulating glass (except in wet rooms and balconies).
- Electric shutters in the entire apartment (except in wet rooms and residential secure space - Mamad). Including Shabbat mechanism.
- Preparation for screens in the living room and bedrooms (except in Mamad, wet rooms and service porch).
- Quality interior doors with a wide installation of straight lintel in a number of shades for selection including white, made by Pandoor, model "Unique" or of equal value.
- Second regular door for the security room (Mamad).

### Electricity and communications

- Smart home system which includes a main control panel (according to the company's specifications)
- Bticino/ Gewiss electrical appliances or of equal value.
- TV, phone and USB ports.
- Preparation for an instant gas water heating system.

### Kitchen

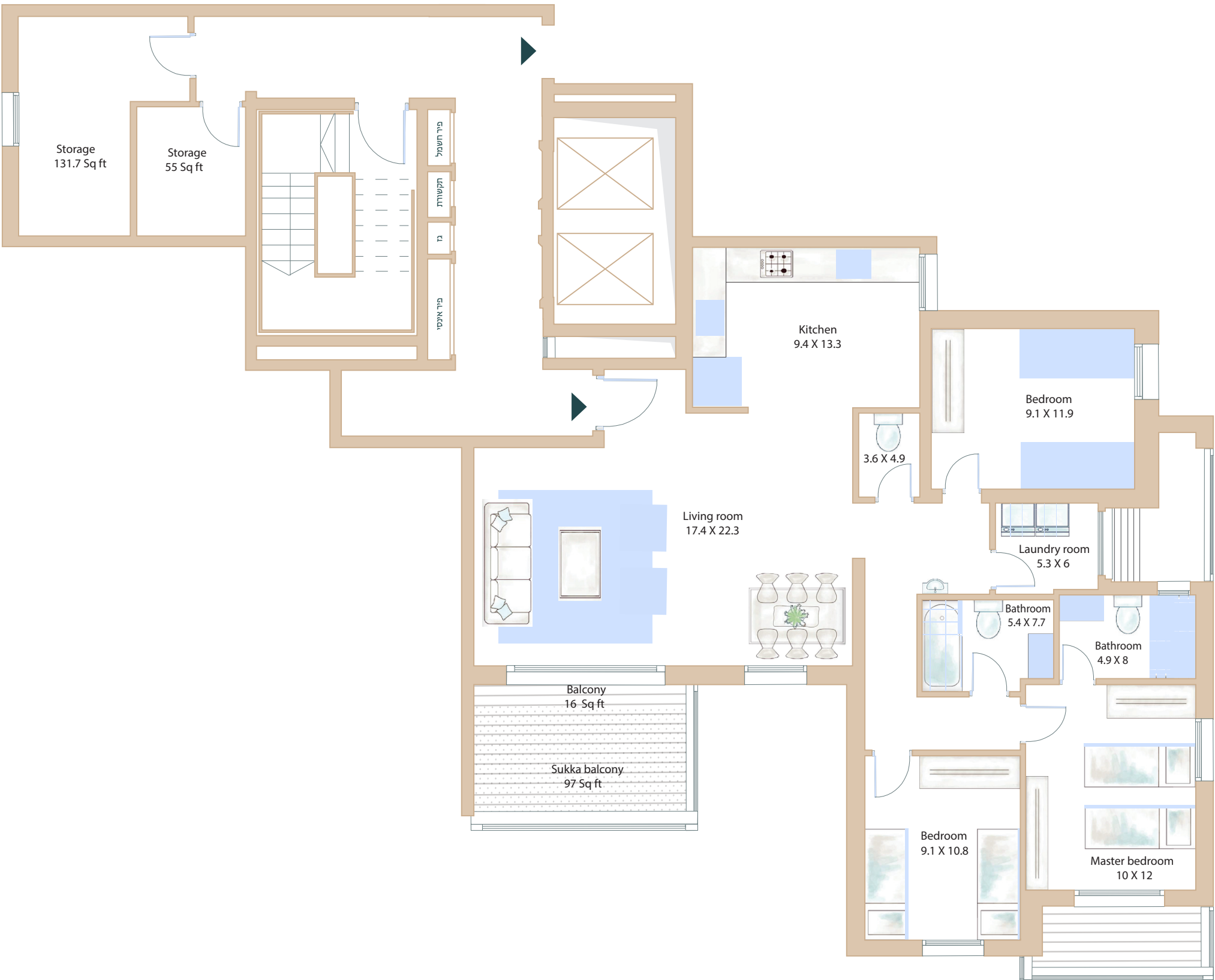
- Upper and lower luxurious kitchen cabinets from a leading kitchen chain store, including silent closure, built-in units, and Klapa in a selection of shades.
- Caesarstone countertop or of equal value from a selection of models and shades (according to the company's decision).
- 2 Acrylic/ stainless steel kitchen sinks in a flat installation.
- Extending "Perach" faucet.
- Preparation for an induction stove.
- Preparation for 2 dishwashers.
- Water outlet for the fridge.

### Bathrooms

- Granit porcelain anti-slip tiling in the bathrooms, in a variety of models and colors.
- Hanging toilets with hidden flush tanks.
- Master bedroom bathroom - 4 Way concealed mixer valve .
- Hanging/placed bathroom vanity, with an integral surface and a matching mirror.
- Faucets in bathroom manufactured by GROHE or of equal value.
- Acrylic bathtub manufactured by leading companies.
- Preparation for a heater outlet.

### Sun Porch

- 15/60 Deck like tiling in different sizes and shades.
- Water outlet.
- Gas outlet.



The plans presented are for marketing and imaging purposes only, and do not obligate the company. It is also made clear that all plans are subject to a building permit / planning committee approval, and therefore changes and adjustments may be required by the planning institutions and/or authorities and/or professional consultants. In order to avoid doubt, it shall be made clear that the company is entitled to change and/or exchange the technical specifications and or amend the simulation of the plans without prior notice. The company shall be obligated only by the technical specifications and sales plans which are signed and attached to the contract. Nothing in the aforementioned shall detract from the buyer's obligation to carry out his inspections with anything pertaining to the planning condition in the complex and of future approved or to be approved construction. Errors and omissions excepted.