



PowerShot G7X Mark III

Advanced User Guide

Contents

Camera Basics

Shooting

Playback

Wireless Features

Function Settings

Accessories

Appendix

Index

ENGLISH

These operating instructions assume you are using PowerShot G7X Mark III firmware version 1.3.0 or later.

Preliminary Notes and Legal Information

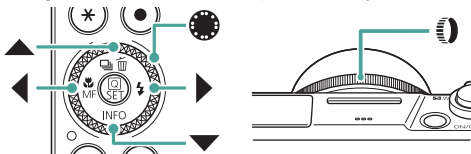
- Take and review some test shots initially to make sure the images were recorded correctly. Please note that Canon Inc., its subsidiaries and affiliates, and its distributors are not liable for any consequential damages arising from any malfunction of a camera or accessory, including memory cards, that result in the failure of an image to be recorded or to be recorded in a way that is machine readable.
- The user's unauthorized photographing or recording (video and/or sound) of people or copyrighted materials may invade the privacy of such people and/or may violate others' legal rights, including copyright and other intellectual property rights. Note that restrictions may apply even when such photographing or recording is intended solely for personal use.
- For information on camera warranty or Customer Support, please refer to the warranty information provided with your camera User Manual Kit.
- Although the screen is produced under extremely high-precision manufacturing conditions and more than 99.99% of the pixels meet design specifications, in rare cases some pixels may be defective or may appear as red or black dots. This does not indicate camera damage or affect recorded images.
- When the camera is used over an extended period, it may become warm. This does not indicate damage.

Introduction

- To jump to the beginning of a chapter, click the chapter title along the right side of the top page.
- For basic page navigation, click the icons at the bottom of each page.
 - 🏠: Go to the top page
 - ↶: Return to the previous page
 - ◀: Go back a page
 - ▶: Go forward a page
- Instructions in this guide apply to the camera under default settings.
- Tabs such as **AUTO** identify which modes are used in the shooting instructions. Some features are also available in other modes.
- **!**: Important information, or tips for expert use

Text Conventions

- In this guide, icons are used to represent the corresponding camera buttons and dials on which they appear or which they resemble.
- The following camera controls are represented by icons.



- On-screen icons and text are indicated in brackets.
- Numbers in some figures and illustrations correspond to numbers in the steps.
- xx: Pages with related information (in this example, “xx” represents a page number)
- For convenience, all supported memory cards are simply referred to as the “memory card”.

Contents

Preliminary Notes and Legal Information	2
Introduction	3
Text Conventions	3
Common Camera Operations	13
Safety Instructions.....	16
Camera Basics	19
Getting Ready	20
Attaching the Strap	20
Charging the Battery Pack.....	21
Preparing a Memory Card	22
Inserting/Removing the Battery Pack and Memory Card	23
Setting the Date, Time, Time Zone, and Language	25
Holding the Camera	28
Trying the Camera Out.....	29
Shooting	29
Viewing	31
Part Names	32
Front	32
Back.....	33
Adjusting the Screen Angle.....	34
Tilting the Screen Downward.....	34
Tilting the Screen Upward	34
Indicator Display.....	35
Setting a Shooting Mode.....	36
Configuring Camera Features.....	37
Quick Control Screen	37
Menu Screen	39
Features Available on the Quick Control Screen	41

Menu Settings	42
Shooting Mode Screen.....	44
Frames on the Shooting Screen	45
Shooting Display Options.....	46
Playback Display Options	47
Touch Operation.....	48
Choosing Subjects.....	48
Quick Control Screen	49
Menu Screen	50
Viewing	52
On-Screen Keyboard	54
Shooting.....	55
Shooting with Camera-Determined Settings	
(Auto Mode/Hybrid Auto Mode).....	56
Image Stabilization Icons.....	59
Shooting with Effects Applied (Creative Assist)	60
Shooting in Hybrid Auto Mode	62
Shooting Specific Scenes (Special Scene Mode)	63
Shooting Yourself under Optimal Settings (Self Portrait Mode).....	67
Shooting Panoramas (Panorama Mode)	68
Capturing Subjects Against Flowing Backgrounds	
(Panning Mode)	70
Shooting People against Starry Skies (Star Portrait Mode).....	71
Shooting Night Scenes under Starry Skies	
(Star Nightscape Mode).....	74
Shooting Star Trails (Star Trails Mode).....	76
Recording Movies of Star Movement	
(Star Time-Lapse Movie Mode)	78
Shooting with Image Effects (Creative Filters Mode)	82
Shots Resembling Miniature Models (Miniature Effect).....	87
Recording a Variety of Movies (Movie Mode)	88

Vlogging (Video blog recording mode)	89
Recording Movies at Specific Shutter Speeds and Aperture Values (Movie Manual Exposure)	90
Recording HDR Movies	91
Shooting in Program AE (P Mode)	92
Shooting at Specific Shutter Speeds (Tv Mode)	93
Shooting at Specific Aperture Values (Av Mode)	94
Shooting at Specific Shutter Speeds and Aperture Values (M Mode)	95
Shooting Long Exposures (Bulb)	97
Zooming In Closer on Subjects (Digital Zoom)	98
Locking Image Brightness / Exposure (AE Lock)	99
Shooting Close-Ups (Macro)	100
Shooting in Manual Focus Mode	101
Easily Identifying the Focus Area (MF Peaking)	103
Shooting with AF Lock	104
Shooting at Preset Focal Lengths (Step Zoom)	105
Changing Image Quality	106
Capturing in RAW Format	106
Changing the Aspect Ratio	108
Changing the Image Display Period after Shots	109
Changing the Flash Mode	110
Locking Brightness / Exposure in Flash Photography (FE Lock)	111
Configuring Flash Settings	113
Adjusting Flash Exposure Compensation	113
Adjusting Flash Output	114
Changing the Flash Timing	115
Reducing Red-Eye	115
Configuring Safety FE	116

Continuous Shooting	117
Using the Self-Timer	118
Shooting in RAW Burst Mode	119
Adding a Date Stamp	121
Adjusting Image Brightness (Exposure Compensation).....	122
Auto Exposure Bracketing (AEB Shooting)	123
Changing the ISO Speed for Stills	125
Changing the ISO Speed Range	125
Adjusting ISO Auto Range	126
Setting the Minimum Shutter Speed for ISO Auto	126
Changing the ISO Speed for Movies.....	128
Changing the ISO Speed Range	128
Adjusting the Maximum ISO Auto Setting	129
Auto Correction of Brightness and Contrast (Auto Lighting Optimizer)	130
Shooting Bright Subjects (Highlight Tone Priority)	131
Adjusting ND Filter Settings	132
Changing the Metering Method.....	133
Setting the Metering Timer	134
Easily Adjusting Exposure (Zebra Settings).....	135
Configuring Exposure Simulation.....	137
Capturing Natural Colors (White Balance).....	138
Custom White Balance	140
Customizing Colors (Picture Style)	142
Customizing Picture Styles	144
Saving Customized Picture Styles	147
Reducing Noise in High-ISO Shooting	148
Using Multi Shot Noise Reduction	148
Shooting by Touching the Screen (Touch Shutter).....	150
Shooting with the Electronic Shutter	151

Shooting with Servo AF	152
Choosing the AF Method.....	153
Moving the AF Point	154
Changing the Focus Setting.....	155
Configuring the AF-Assist Beam	156
Continuous Shooting as the Focal Distance is Changed (Focus Bracketing).....	157
Fine-Tuning the Focus	160
Changing the IS Mode Settings	161
Correcting Severe Camera Shake.....	162
Using Auto Level	163
Using Digital Tele-Converter	164
Changing Movie Recording Size.....	165
Recording Movies for Slow-Motion Playback (High Frame Rate).....	166
Configuring Sound Recording Settings	167
Adjusting the Recording Volume	167
Wind Filter	168
Attenuator	168
Configuring Movie Servo AF	169
Using Auto Slow Shutter	170
Miniature Model Effect in Movies (Miniature Effect Movie)	171
Recording Video Snapshots.....	173
Recording Time-Lapse Movies.....	175
Recording Movies of Yourself.....	177
Using the Movie Self-Timer	178
Configuring Information Display for HDMI Output.....	179
Setting the Type of Digest Movie	180
Playback.....	181
Viewing.....	182

Magnifying Images	184
Viewing Digest Movies	185
Finding Images in an Index	186
Editing Movies	187
Removing the Beginning/End of Movies	187
Extracting Frames of 4K Movies as Stills	189
Editing Digest Movies	190
Extracting Stills from RAW Burst Images	192
Protecting Images	194
Protecting Multiple Images	195
Rotating Images	197
Changing Movie Rotation Information	198
Erasing Images	199
Erasing Multiple Images at Once	200
Adding Images to Print Orders (DPOF)	202
Printing Images Added to the Print Order (DPOF)	203
Adding Images to a Photobook	204
Applying Filter Effects to Images (Creative Filters)	205
Processing RAW Images	206
Applying Your Favorite Effects (Creative Assist)	208
Enabling Quick Control RAW Processing	209
Correcting Red-Eye	210
Combining Video Snapshots	211
Cropping	213
Resizing Images	215
Rating Images	216
Viewing Slideshows	217
Finding Images Matching Specified Conditions	218
Using the Control Ring to Find Images	219
Customizing Playback Information Display	220





Starting Playback from the Last Image Displayed	221
Wireless Features	222
Available Wireless Features.....	223
Saving Camera Images to a Smartphone	225
Connecting to Smartphones via Wi-Fi with the Wi-Fi Button.....	229
Restricting Image Viewing	231
Features Used with Smartphones.....	232
Sending Images to a Smartphone Automatically as You Shoot...	232
Shooting Remotely as You View a Live Image on the Smartphone	232
Controlling the Camera from a Smartphone.....	233
Geotagging Images as You Shoot	233
Connecting to Printers via Wi-Fi.....	235
Establishing a Connection via an Access Point.....	237
Sending Images to a Computer Automatically	239
Uploading Images to Web Services	243
Registering image.canon.....	243
Uploading Images to image.canon	246
Streaming Images	247
Live Streaming.....	249
Reconnecting via Wi-Fi	253
Ending Wi-Fi Connections.....	254
Clearing Information of Devices Paired via Bluetooth.....	255
Changing or Deleting Connection Settings	256
Function Settings.....	257
Selecting and Creating Folders.....	258
Changing File Numbering	259
Configuring Auto Rotation of Vertical Images.....	260
Adding Orientation Information to Movies	261
Formatting Memory Cards	262

Setting Start-up Screen Display	264
Using Eco Mode	265
Adjusting Power-Saving Features	266
Adjusting Screen Brightness	267
Switching the Color of Screen Information	268
Adjusting the Date, Time, and Time Zone	269
Changing the Language	270
Lens Retraction Timing	271
Setting the Video System	272
Adjusting the Touch-Screen Panel	273
Adjusting Beeping	274
Adjusting the Volume	275
Setting the HDMI Output Resolution	276
RAW Playback on an HDR TV	277
Customizing Shooting Information Display	278
Setting Reverse Display	280
Metric / Non-Metric Display	281
Configuring the Feature Guide	282
Configuring Custom Functions	283
Customizing Buttons	284
Custom Shooting Modes (C Mode)	286
Restoring Default Camera Settings	288
Setting Copyright Information to Record in Images	289
Downloading Manuals/Software from a QR Code	290
Displaying Certification Logos	291
Saving Commonly Used Shooting Menu Items (My Menu)	292
Renaming My Menu Tabs	293
Deleting a My Menu Tab	293
Deleting All My Menu Tabs	293

Deleting All Added Items.....	294
Customizing My Menu Display	294
Accessories	295
Optional Accessories.....	296
Power Supplies.....	296
Flash.....	296
Others.....	297
Printers	297
Using Optional Accessories	298
Playback on a TV.....	298
Using a USB Power Adapter to Charge/Power the Camera.....	300
Shooting Remotely	302
Using an External Microphone	303
Saving Images to a Computer.....	304
Printing Images	305
Appendix.....	307
Handling Precautions.....	308
Troubleshooting	309
On-Screen Information.....	314
When Shooting	314
During Playback	316
Precautions for Wireless Features	318
Security Precautions.....	319
Third-Party Software	320
Personal Information and Security Precautions	323
Trademarks and Licensing	324
Disclaimer	326
Index	327

Common Camera Operations

Shoot

- Use camera-determined settings (Auto Mode, Hybrid Auto Mode)
 -  29,  62
- Shoot yourself under optimal settings (Self Portrait)
 -  67
- Shoot panoramas (Panoramic Shot)
 -  68

Shooting people well



Portraits
( 63)

Matching specific scenes



Handheld Night
Scene
( 63)



Fireworks
( 63)




HDR Backlight
Control
( 63)



Food
( 63)

Applying special effects




Smooth Skin
( 63)



Monochrome
( 82)



Background Defocus
( 82)



Soft Focus
(📖82)



Fish-Eye Effect
(📖82)



Like Watercolor Paintings
(📖82)



Toy Camera Effect
(📖82)





Miniature Effect
(📖87, 📖171)

- Focus on faces
 - 📖29, 📖63, 📖153
- Without using the flash (Flash Off)
 - 📖110
- Include yourself in the shot (Self-Timer)
 - 📖118
- Add a date stamp
 - 📖121
- Movie clips and photos together
 - 📖62
- Convey a sense of speed with a blurred background
 - 📖70
- Shoot starry skies
 - 📖71, 📖74, 📖76, 📖78




View

- View images
 - 📖31, 📖181
- Automatic playback (Slide Show)
 - 📖217
- On a TV
 - 📖298




- Browse through images quickly
 -  186
- Erase images
 -  199


Record/View Movies

- Record movies
 -  29,  88
- View movies
 -  31







Print

- Print pictures
 -  305

Save

- Save images to a computer
 -  304

Use Wi-Fi Features

- Send images to a smartphone
 -  225,  232
- Print pictures
 -  235
- Share images online
 -  243
- Stream images
 -  247
- Send images to a computer
 -  239

Safety Instructions

- Be sure to read these instructions in order to operate the product safely.
- Follow these instructions to prevent injury or harm to the operator of the product or others.



WARNING

Denotes the risk of serious injury or death.

- Keep the product out of the reach of young children.
A strap wrapped around a person's neck may result in strangulation.
- Use only power sources specified in this instruction manual for use with the product.
- Do not disassemble or modify the product.
- Do not expose the product to strong shocks or vibration.
- Do not touch any exposed internal parts.
- Stop using the product in any case of unusual circumstances such as the presence of smoke or a strange smell.
- Do not use organic solvents such as alcohol, benzine or paint thinner to clean the product.
- Do not get the product wet. Do not insert foreign objects or liquids into the product.
- Do not use the product where flammable gases may be present.
This may cause electric shock, explosion or fire.
- Observe the following instructions when using commercially available batteries or provided battery packs.
 - Use batteries/battery packs only with their specified product.
 - Do not heat batteries/battery packs or expose them to fire.
 - Do not charge batteries/battery packs using non-authorized battery chargers.
 - Do not expose the terminals to dirt or let them come into contact with metallic pins or other metal objects.
 - Do not use leaking batteries/battery packs.
 - When disposing of batteries/battery packs, insulate the terminals with tape or other means.

This may cause electric shock, explosion or fire.

If a battery/battery pack leaks and the material contacts your skin or clothing, flush the exposed area thoroughly with running water. In case of eye contact, flush thoroughly with copious amounts of clean running water and seek immediate medical assistance.



- Observe the following instructions when using a battery charger or AC adapter.
 - Periodically remove any dust buildup from the power plug and power outlet using a dry cloth.
 - Do not plug in or unplug the product with wet hands.
 - Do not use the product if the power plug is not fully inserted into the power outlet.
 - Do not expose the power plug and terminals to dirt or let them come into contact with metallic pins or other metal objects.
 - Do not touch the battery charger or AC adapter connected to a power outlet during lightning storms.
 - Do not place heavy objects on the power cord. Do not damage, break or modify the power cord.
 - Do not wrap the product in cloth or other materials when in use or shortly after use when the product is still warm in temperature.
 - Do not leave the product connected to a power source for long periods of time.

This may cause electric shock, explosion or fire.

- Do not allow the product to maintain contact with the same area of skin for extended periods of time during use.

This may result in low-temperature contact burns, including skin redness and blistering, even if the product does not feel hot. The use of a tripod or similar equipment is recommended when using the product in hot places and for people with circulation problems or less sensitive skin.

- Follow any indications to turn off the product in places where its use is forbidden.

Not doing so may cause other equipment to malfunction due to the effect of electromagnetic waves and even result in accidents.



CAUTION

Denotes the risk of injury.

- Do not fire the flash near the eyes.

It may hurt the eyes.

- Strap is intended for use on the body only. Hanging the strap with any product attached on a hook or other object may damage the product. Also, do not shake the product or expose the product to strong impacts.

- Do not apply strong pressure on the lens or allow an object to hit it.

This may cause injury or damage to the product.

- Flash emits high temperatures when fired. Keep fingers, any other part of your body, and objects away from the flash unit while taking pictures.

This may cause burns or malfunction of the flash.

- Do not leave the product in places exposed to extremely high or low temperatures. The product may become extremely hot/cold and cause burns or injury when touched.

- If any abnormal skin reaction or irritation occurs during or following the use of this product, refrain from further use and get medical advice/attention.



CAUTION

Denotes the possibility of property damage.

- Do not aim the camera at intense light sources, such as the sun on a clear day or an intense artificial light source.

Doing so may damage the image sensor or other internal components.

- When using the camera on a sandy beach or at a windy location, be careful not to allow dust or sand to enter the camera.
- Wipe off any dust, grime, or other foreign matter on the flash with a cotton swab or cloth.

The heat emitted from the flash may cause foreign matter to smoke or the product to malfunction.

- Remove and store the battery pack/batteries when you are not using the product. Any battery leakage that occurs may cause product damage.
- Before you discard the battery pack/batteries, cover the terminals with tape or other insulators.

Contacting other metal materials may lead to fire or explosions.

- Unplug any battery charger used with the product when not in use. Do not cover with a cloth or other objects when in use.

Leaving the unit plugged in for a long period of time may cause it to overheat and distort, resulting in fire.

- Do not leave any dedicated battery packs near pets. Pets biting the battery pack could cause leakage, overheating, or explosion, resulting in product damage or fire.

- If your product uses multiple batteries, do not use batteries that have different levels of charge together, and do not use old and new batteries together. Do not insert the batteries with the + and – terminals reversed.

This may cause the product to malfunction.

- When card reading/writing is in progress, do not turn the camera off, open the memory card/battery cover, or shake or hit the camera.

Doing so may corrupt images or damage the camera or memory card.

- Do not force the memory card into the camera facing the wrong way. This could damage the camera.

Camera Basics

Basic information and instructions, from initial preparations to shooting and playback.

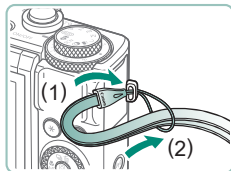


19

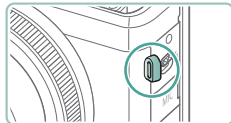


Getting Ready

● Attaching the Strap

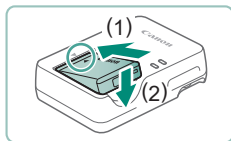


- 1** Attach the included strap to the strap mount.

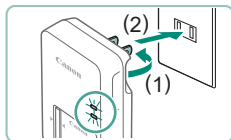


- The strap can also be attached to the left side of the camera.

● Charging the Battery Pack

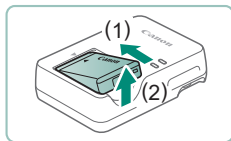


1 Insert the battery pack in the charger.



2 Charge the battery pack.

- Lamp colors
 - Charging: Orange
 - Fully charged: Green




3 Remove the battery pack.



- To protect the battery pack and keep it in optimal condition, do not charge it continuously for more than 24 hours.
- The charger can be used in areas with 100 – 240 V AC power (50/60 Hz). For power outlets in a different format, use a commercially available adapter for the plug. Never use an electrical transformer designed for traveling, which may damage the battery pack.
- Charged battery packs gradually lose their charge, even when they are not used. Charge the battery pack on (or immediately before) the day of use.

● Preparing a Memory Card

Use the following memory cards (sold separately), in any capacity.

- SD memory cards*¹
- SDHC memory cards*^{1*2}
- SDXC memory cards*^{1*2} 

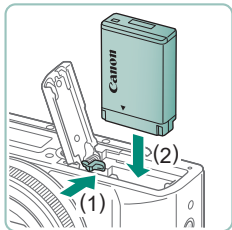
*¹ Cards conforming to SD standards. However, not all memory cards have been verified to work with the camera.

*² UHS-I memory cards are also supported.

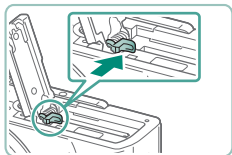
Inserting/Removing the Battery Pack and Memory Card



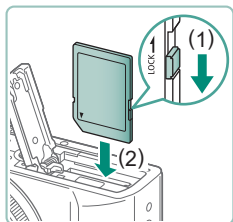
1 Open the cover.



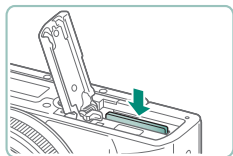
2 Insert the battery pack.



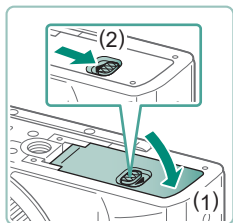
To remove:



3 Insert the memory card.



To remove:

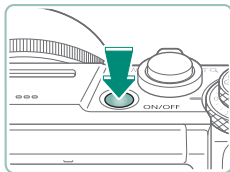


4 Close the cover.

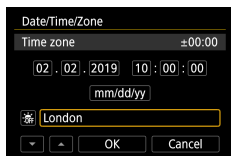


- If you insert the battery pack facing the wrong way, it cannot be locked into the correct position. Always confirm that the battery pack is facing the right way and locks when inserted.
- Before using a new memory card or a card formatted in another device, you should format the card with this camera.
- Recording is not possible on memory cards with a write-protect switch when the switch is in the locked position. Slide the switch to unlock it.
- If [Change the battery pack] is displayed, change the battery pack after the camera turns off automatically.

Setting the Date, Time, Time Zone, and Language

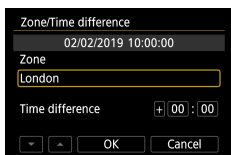


1 Turn the camera on.

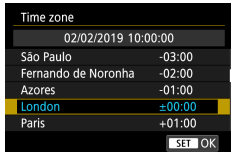


2 Set the time zone.

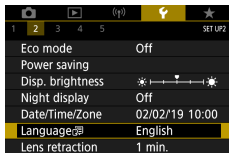
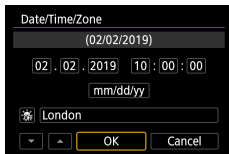
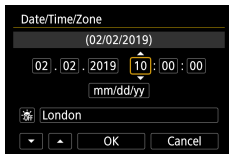
- ◀▶ buttons or ⚙ dial to choose a time zone → ⌚ button



- ⌚ button



- ▲/▼ buttons or ⚙ dial to choose a time zone → ⌚ button → ◀▶ buttons or ⚙ dial to choose [OK] → ⌚ button



3 Set the date and time.

- ◀/▶ buttons or ⚙ dial to choose the date or time → ⌚ button → ▲/▼ buttons or ⚙ dial to adjust → ⌚ button
- Choose [OK] → ⌚ button

4 Set the display language.

- ▲/▼ buttons to choose [Language] → ⌚ button
- ▲/▼/◀/▶ buttons to choose a language → ⌚ button



- Set the current date, time, and zone correctly if the [Date/Time/Zone] screen is displayed when you turn the camera on. Information you specify this way is recorded in image properties when you shoot, and it is used when you manage images by shooting date or print images showing the date.
- To set daylight saving time (1 hour ahead), set [☀️Off] to [☀️On] on the [Date/Time/Zone] screen.
- If the date/time/zone settings have been cleared, set them again correctly.
- The date/time/zone must be set to enable normal camera temperature control. Once the date/time/zone are set, temperature warnings can be displayed correctly.



Holding the Camera

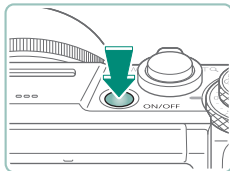


- Place the strap around your wrist.
- When shooting, keep your arms close to your body and hold the camera securely to prevent it from moving. If you have raised the flash, do not rest your fingers on it.

Trying the Camera Out

Try out the camera by turning it on, shooting some stills or movies, and then viewing them.

Shooting

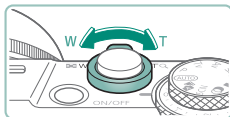


1 Turn the camera on.

- To turn the camera off, press the ON/OFF button again.

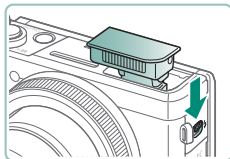


2 Enter AUTO mode.

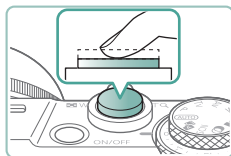


3 Zoom in or out, as needed.

- Move the zoom lever as you watch the screen.

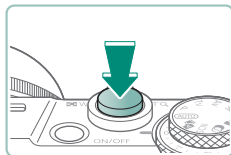


When using the flash:



4 Focus (press halfway).

- The camera beeps after focusing.
- An AF point is displayed around positions in focus.



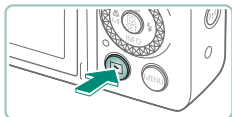
5 Shoot (press fully).

When recording movies:

- [●REC] is displayed during recording.
- To stop movie recording, press the movie shooting button again.



Viewing



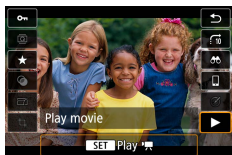
1 Press the  button.






2 Choose images.



● Movies are labeled with **[SET]** .



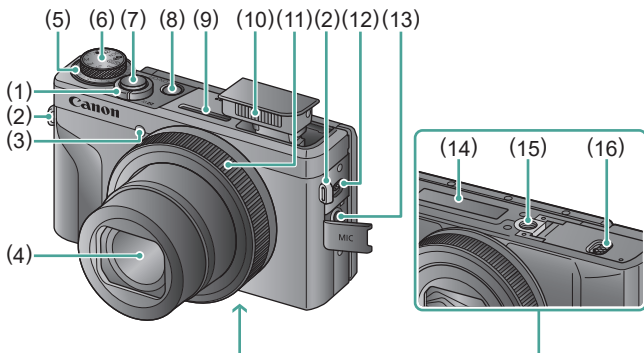
Playing movies:

-  button (twice)
- Press the / buttons to adjust the volume.



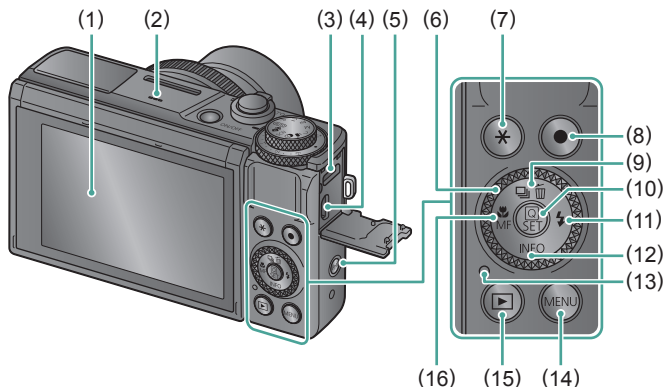
Part Names

Front



- | | |
|--|--------------------------------------|
| (1) Zoom lever | (8) ON/OFF button |
| Shooting: W (wide angle) / T (telephoto) | (9) Microphone (stereo) |
| Playback: (index) / (magnify) | (10) Flash |
| (2) Strap mount | (11) Control ring (ring) |
| (3) Lamp | (12) (Flash up) lever |
| (4) Lens | (13) External microphone IN terminal |
| (5) Exposure compensation dial | (14) Serial number |
| ●: Dial/Ring Assign Position | (15) Tripod socket |
| (6) Mode dial | (16) Memory card/battery cover |
| (7) Shutter button | |

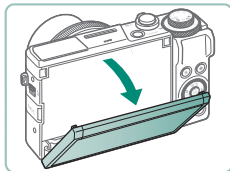
Back



- (1) **Screen**
Opens upward about 180° and downward about 45°.
- (2) **Speaker**
- (3) **DIGITAL terminal**
- (4) **HDMI™ terminal**
- (5) **(Wi-Fi) button**
- (6) **Control dial (dial)**
- (7) *** (AE lock) button**
- (8) **Movie shooting button**
Movies can also be recorded in modes other than Movie mode.
- (9) **(Drive mode) / (Single-image erase) / ▲ Up button**
- (10) **(Quick Control) button**
Displays the Quick Control screen. Also used to confirm selected settings.
- (11) **⚡ (Flash) / ► Right button**
- (12) **INFO / ▼ Down button**
- (13) **Indicator**
- (14) **MENU button**
Used to display menu screens.
- (15) **▶ (Playback) button**
- (16) **(Macro) / MF (Manual focus) / ◀ Left button**

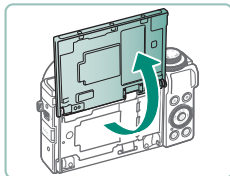
Adjusting the Screen Angle

Tilting the Screen Downward



- Pull the top of the screen downward toward you.
- The screen opens to about 45°.

Tilting the Screen Upward



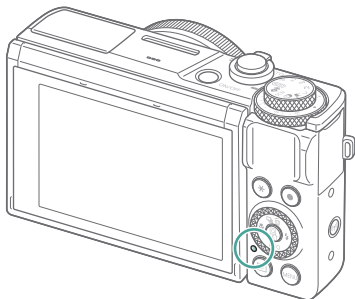
- The screen lifts upward and opens to about 180°.
- View a mirror image of yourself when shooting with the screen rotated around toward the front.
- When finished, return the screen to the original position.



- When the camera is not in use, keep the screen closed.
- Do not force the screen open any wider, which may damage the camera.

Indicator Display

Indicator display varies depending on the camera status.










Color	Indicator Status	Camera Status
Green	On	<ul style="list-style-type: none">● Recording stills to the memory card, or reading stills from the card
	Slow blinking	<ul style="list-style-type: none">● Display off
	Blinking	<ul style="list-style-type: none">● Recording movies to the memory card, or reading movies from the card● Transmitting via Wi-Fi
Orange	On	<ul style="list-style-type: none">● Charging via USB
	Blinking	<ul style="list-style-type: none">● USB charging error

Setting a Shooting Mode

Use the mode dial to access each shooting mode.



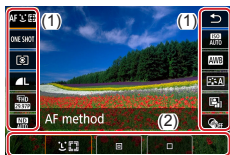
- | | |
|---|--|
| <p>(1) Tv Mode Tv
Set the shutter speed before shooting (📖93). Set with the  ring. The camera automatically adjusts the aperture value to suit your shutter speed.</p> <p>(2) P Mode P
Shutter speed and aperture value are automatically adjusted to suit subject brightness. Set a variety of settings freely before shooting (📖92).</p> <p>(3) Auto Mode AUTO
Fully automatic shooting, with camera-determined settings (📖56).</p> <p>(4) Hybrid Auto Mode 
Automatically record a clip of the scene before each shot (📖62).</p> <p>(5) Special Scene Mode SCN
Shoot with settings for specific scenes (📖63).</p> | <p>(6) Av Mode Av
Set the aperture value before shooting (📖94). Set with the  ring. The camera automatically adjusts the shutter speed to suit your aperture value.</p> <p>(7) M Mode M
Set the shutter speed and aperture value before shooting to obtain the desired exposure (📖95). Turn the  dial to set the shutter speed, and turn the  ring to set the aperture value.</p> <p>(8) C Mode C
Save commonly used shooting modes and your configured function settings for reuse (📖286).</p> <p>(9) Movie Mode 
Record a variety of movies (📖88).</p> <p>(10) Creative Filters Mode 
Add a variety of effects to images when shooting (📖82).</p> |
|---|--|

Configuring Camera Features

Quick Control Screen



1 Press the  button.



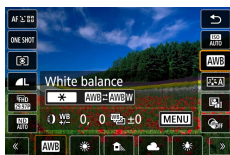
- (1) Setting items
- (2) Setting options



2 Choose a setting item.



3 Choose a setting option.




- Configure items labeled with a **[MENU]** icon by pressing the **MENU** button.

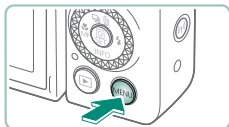


4 Complete the setting.

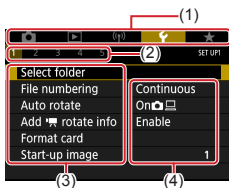


- You can also choose options by turning the  dial.
- You can also configure Quick Control features from the Menu screen.

Menu Screen

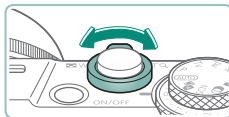


1 Press the MENU button.






2 Choose a tab.

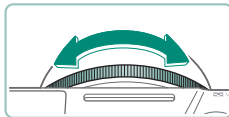
- (1) Main tab
- (2) Sub-tab
- (3) Setting items
- (4) Setting options



- Use the zoom lever to choose a main tab.





- Use the   buttons or  ring to choose a sub-tab.





3 Choose a setting item.

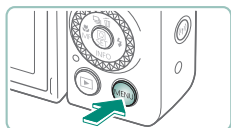
- Some items are selected with the ▲/▼ buttons or the  dial on a different screen, after you press the  button initially.



4 Choose a setting option.




5 Complete the setting.



6 Return to the shooting screen.







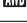
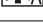


Features Available on the Quick Control Screen



Press the  button on shooting or playback screens to access the Quick Control screen, where you can adjust settings. Choose a setting item on the right or left to display setting options for it on the bottom.

- (1) Setting items
- (2) Setting options

The following settings are available in **P** mode. Available setting items and options vary by shooting mode.






	AF method	Choose an auto focus (AF) mode for the scene you are shooting.
ONE SHOT	AF operation	Choose [SERVO] to keep subjects in focus while you press the shutter button halfway.
	Metering mode	Choose how brightness is measured.
	Image quality	Choose the size (number of pixels) and compression (quality) of your shots.
	Movie rec. size	Choose the recording size and frame rate for movies.
	ND filter	Reduce light intensity to obtain suitable brightness.
	ISO speed	Choose the ISO speed.
	White balance	Shoot with natural-looking colors under specific types of lighting.
	Picture Style	Choose color settings that express scenes or subjects well.
	Auto Lighting Optimizer	Choose the level of auto correction for brightness and contrast.
	Creative filters	Add a variety of effects to images when shooting.

Menu Settings

Use menu screens to configure a variety of camera features. To access menu screens, press the **MENU** button. Setting items are organized into five main groups and multiple tabs for each group.


You can configure the following setting items on menu screens. Available setting items vary by shooting mode.

Shooting settings

- Shooting mode
- Image quality
- Still img aspect ratio
- Image review
- Flash settings
- Drive mode
- RAW burst mode
- Date stamp 
- Expo.comp./AEB
-  ISO speed settings
-  ISO speed settings
- Auto Lighting Optimizer
- Highlight tone priority
- ND filter
- Metering mode
- Metering timer
- Expo. simulation
- White balance
- Custom White Balance
- WB Shift/Bkt.
- HDMI info disp
- Picture Style
- High ISO speed NR
- Retain Creative Assist data
- Touch Shutter
- Shutter mode
- AF operation
- AF method
- Continuous AF
- AF-assist beam firing
- Focus bracketing
- AF+MF
- MF peaking settings
- Safety MF
- MF-point zoom
- IS settings
-  Auto level
- Digital zoom
- Digest type
- Movie rec quality
- Movie self-timer
- Sound recording
- Movie Servo AF
-  Auto slow shutter
- Star time-lapse movie setting
- Star emphasis
- Star portrait settings
- Color adjustment
- Video snapshot
- Time-lapse movie
- Remote control
- Zebra settings





Playback settings

- Protect images
- Rotate stills
- Change mov rotate info
- Erase images
- Print order
- Photobook Set-up
- Creative filters
- RAW image processing
- Creative Assist
- Quick Control RAW processing
- Red-eye correction
- Create album
- Cropping
- Resize
- Rating
- Slide show
- Set image search conditions
- Image jump w/ 
- Playback information display
- View from last seen

Wireless settings

- Wi-Fi/Bluetooth connection
- Wi-Fi settings
- Bluetooth settings
- Nickname
- GPS settings
- Clear wireless settings

Function settings

- Select folder
- File numbering
- Auto rotate
- Add  rotate info
- Format card
- Start-up image
- Eco mode
- Power saving
- Disp. brightness
- Night display
- Date/Time/Zone
- Language 
- Lens retraction
- Video system
- Touch control
- Beep
- Volume
- HDMI resolution
- HDMI HDR output
- Shooting info. disp.
- Reverse display
- Units
- Feature guide
- Custom Functions (C.Fn)
- Custom shooting mode (C mode)
- Reset camera
- Copyright information
- Manual/software URL
- Certification Logo Display
- Firmware

My Menu

- Add My Menu tab
- Delete all My Menu tabs
- Delete all items
- Menu display



Shooting Mode Screen



- (1) Shooting mode/Scene icon
- (2) Recordable shots
- (3) Maximum continuous shots
- (4) Movie recording time available
- (5) Battery level

Frames on the Shooting Screen

Frames for focusing (AF points) are displayed on the shooting screen.

White frame	Displayed around the subject or person's face detected as the main subject.
Green frame	Displayed after the camera focuses when you press the shutter button halfway.
Blue frame	Displayed as the camera continues to focus on moving subjects. Displayed as long as you press the shutter button halfway.
Yellow frame	Displayed if the camera cannot focus when you press the shutter button halfway.



- Try shooting in **P** mode if no frames are displayed, if frames are not displayed around desired subjects, or if frames are displayed in the background or similar areas.

Shooting Display Options



1 Press the ▼ button.

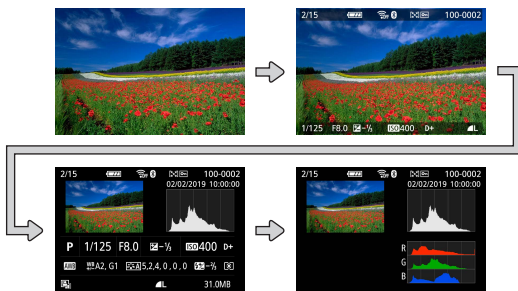


Playback Display Options

You can switch playback screen display to view other information.



1 Press the ▼ button.



- Overexposed highlights blink over the information display image when you access screens showing detailed information.
- A graph called a brightness histogram on the top of screens with detailed information shows the distribution of brightness in images. The horizontal axis represents the degree of brightness, and the vertical axis, how much of the image is at each level of brightness. Viewing this histogram enables you to check exposure.

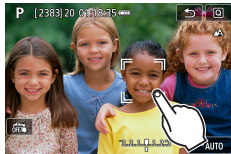
Switching Histograms

- When switched to RGB display, an RGB histogram is displayed that shows the red, green, and blue distribution in images. The horizontal axis represents R, G, or B brightness, and the vertical axis, how much of the image is at that level of brightness. Viewing this histogram enables you to check image color characteristics.

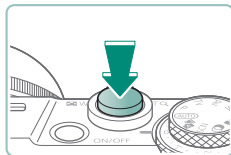
Touch Operation

Choosing Subjects

You can choose subjects by touching a person's face or other things displayed on the screen.



1 Choose a subject.



2 Shoot.



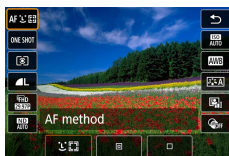
- Tracking may not be possible when subjects are too small or move too rapidly, or when there is inadequate contrast between subjects and the background.

Quick Control Screen



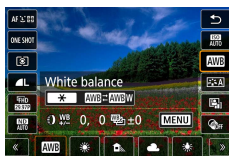
Accessing the setting screen

- Touch **[Q]**.



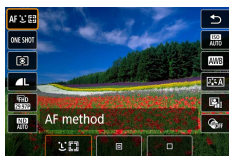
Setting up the camera

- Touch a setting item → a setting option



Switching screens

- Configure items labeled with a **[MENU]** icon by touching **[MENU]**.



Returning to the previous screen

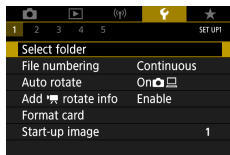
- Touch **[↶]**.



Adjusting amounts on bars

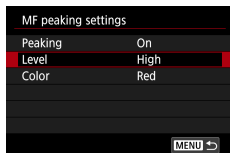
- Touch or drag the bar.

Menu Screen



Setting up the camera

- Touch a main tab → sub-tab → setting item → option



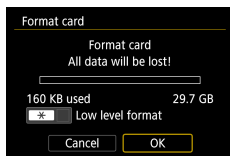
Returning to the previous screen

- Touch [MENU] button.



Adding/removing check marks

- Touch a check box.



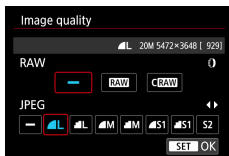
Instead of pressing the * button

- Touch [*].



Instead of pressing the MENU button

- Touch **[MENU]**.



Instead of pressing the button

- Touch **[SET]**.

Viewing



Viewing images individually

- Next image: Drag left
- Previous image: Drag right



Playing movies

- Play: Touch [▶]



Operations during movies

- Stop: Touch the screen
- Resume: Touch [▶]
- Adjust volume: Touch [🔊]



Switching to index display



Displaying fewer images



Magnifying images

- Quickly touch twice.



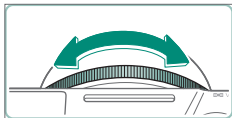
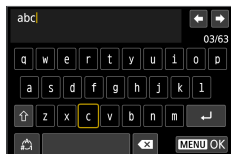
Reducing magnified images

- Restore original size: Touch [↶], or quickly touch the screen twice



- The movie playback panel can also be displayed by touching the screen during movie playback.
- During index display, drag up or down to scroll through images.
- Drag to move the display position during magnified display.

On-Screen Keyboard



Entering characters

- Touch the characters to enter them.

Moving the cursor

- [←]/[→] or ⌂ ring

Switching input modes

- [⇧]: Switch to uppercase
- [🔢]: Switch to numbers or symbols

Deleting characters

- [✖]

Entering line breaks

- [↵]

Returning to the previous screen

- [MENU]

Shooting

Easily shoot in simple modes, or take more sophisticated shots using a variety of features.

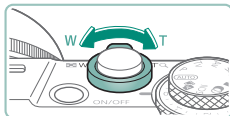


Shooting with Camera-Determined Settings (Auto Mode/Hybrid Auto Mode)

Use Auto mode for fully automatic selection of the optimal settings for the scene, based on the subject and shooting conditions determined by the camera.

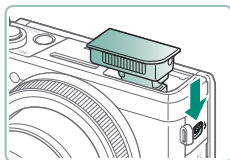


1 Enter AUTO mode.

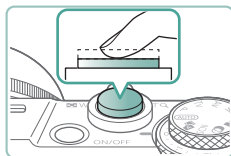


2 Zoom in or out, as needed.

- Move the zoom lever as you watch the screen.

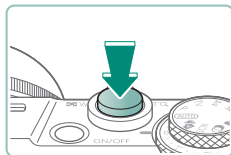
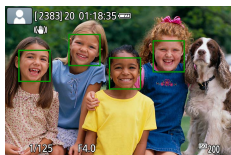


When using the flash:



3 Focus (press halfway).

- The camera beeps after focusing.
- An AF point is displayed around positions in focus.



4 Shoot (press fully).

When recording movies:

- [●REC] is displayed during recording.
- To stop movie recording, press the movie shooting button again.



Still images

- A blinking [Q] icon warns that images are more likely to be blurred by camera shake. In this case, mount the camera on a tripod or take other measures to keep it still.
- If your shots are dark despite the flash firing, move closer to the subject.
- To assist in focusing, the lamp may be activated when you press the shutter button halfway in low-light conditions.





Movies

- The black bars on the top and bottom of the screen are not recorded.
- When you recompose shots, the focus, brightness, and colors will be automatically adjusted.
- Recording stops automatically when the memory card becomes full or a single recording reaches the maximum length.
- The maximum recording time per movie is 29 min. 59 sec.
- Although the camera may become warm when recording movies repeatedly over an extended period, this does not indicate a problem.
- Keep your fingers away from the microphone while recording movies. Blocking the microphone may prevent audio from being recorded or may cause the recording to sound muffled.
- Audio is recorded by the built-in microphone in stereo.
- Avoid touching camera controls other than the movie shooting button or screen when recording movies, because sounds made by the camera will be recorded. To adjust settings or perform other operations during recording, use the touch-screen panel if possible.
- Sounds from Wi-Fi operations may be captured with built-in or external microphones. During sound recording, using the wireless communication function is not recommended.
- Once movie recording begins, the image display area changes and subjects are enlarged to allow for correction of significant camera shake. To record subjects at the same size shown before recording, adjust the image stabilization setting.
- During movie recording, lens operating noises from auto focusing may also be recorded.
- Individual movies that exceed 4 GB may be divided into multiple files. Automatic playback of divided movie files one after another is not supported. Play each movie separately.

Scene Icons

- In **AUTO** modes, shooting scenes determined by the camera are indicated by the icon displayed, and corresponding settings are automatically selected for optimal focusing, subject brightness, and color.
- Try shooting in **P** mode if the scene icon does not match actual shooting conditions, or if it is not possible to shoot with your expected effect, color, or brightness.





Image Stabilization Icons

Optimal image stabilization for the shooting conditions (Intelligent IS) is automatically applied, and the following icons are displayed.

	Image stabilization for still images (Normal)
	Image stabilization for still images when panning (Panning)*
	Image stabilization for angular camera shake and shift-shake in macro shots (Hybrid IS). For movies, is displayed and image stabilization is also applied.
	Image stabilization for movies, reducing strong camera shake, as when recording while walking (Dynamic)
	Image stabilization for slow camera shake, as when recording movies at telephoto (Powered)
	No image stabilization, because the camera is mounted on a tripod or held still by other means. However, during movie recording, is displayed, and image stabilization to counteract wind or other sources of vibration is used (Tripod IS).

* Displayed when you pan, following moving subjects with the camera. When you follow subjects moving horizontally, image stabilization only counteracts vertical camera shake, and horizontal stabilization stops. Similarly, when you follow subjects moving vertically, image stabilization only counteracts horizontal camera shake.

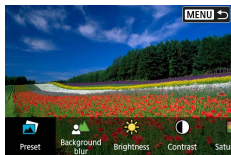




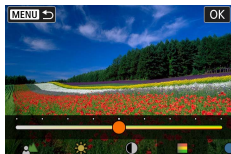
Shooting with Effects Applied (Creative Assist)

Choose your preferred effects when shooting.

AUTO



1 Press the button.



2 Choose an effect.

• buttons → button

3 Choose the effect level and other details.

• buttons → button

• Reset: button



Preset	Choose one of the preset effects.
Background blur	Adjust background blur. Choose higher values to make backgrounds sharper. Choose lower values to make them blurrier. [AUTO] adjusts background blurring to match the brightness.
Brightness	Adjust image brightness.
Contrast	Adjust contrast.
Saturation	Adjust the vividness of colors.
Color tone 1	Adjust blue/amber color tone.




60





 Color tone 2	Adjust magenta/green color tone.
 Monochrome	Adjust the toning effect when shooting in monochrome. Set to [Off] to shoot in color.



- [Background blur] is not available when the flash is used.
- These settings are reset when you switch modes or turn the camera off.
To save the settings, set  [Retain Creative Assist data] to [Enable].
- You can save up to three current effects in [Preset] by touching [Register].



Shooting in Hybrid Auto Mode

Also record 2 – 4 second clips of scenes before each shot automatically, just by shooting stills. Each clip, which ends with the still image and a shutter sound, forms an individual chapter. The camera creates a short digest movie of the day by combining the clips.



1 Enter mode.

2 Focus and shoot.



- For more impressive digest movies, aim the camera at subjects about four seconds before shooting still images.
- Battery life is shorter in this mode than in **AUTO** mode, because digest movies are recorded for each shot.
- A digest movie may not be recorded if you shoot a still image immediately after turning the camera on, choosing mode, or operating the camera in other ways.
- Any sounds and vibrations from your camera or lens operations will be recorded in digest movies.
- Digest movie image quality is **[FHD 29.97P]** for NTSC or **[FHD 25.00P]** for PAL. This varies depending on the video system setting.
- Sounds are not played when you press the shutter button halfway or trigger the self-timer.
- Digest movies are saved as separate movie files in the following cases even if they were recorded on the same day in mode.
 - The digest movie recording time reaches approx. 29 minutes and 59 seconds. (May also be saved as separate files if the size exceeds approx. 4 GB.)
 - The digest movie is protected.
 - Daylight saving time, video system, or time zone settings are changed.
- Recorded shutter sounds cannot be modified or erased.



Shooting Specific Scenes (Special Scene Mode)

Choose a mode matching the shooting scene, and the camera will automatically configure the settings for optimal shots. Try taking some test shots first to make sure you obtain the desired results.



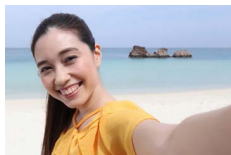
1 Enter SCN mode.



2 button → → choose an option

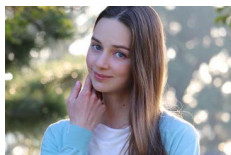
3 Shoot.





 Self Portrait

For self-portraits, customizable image processing includes skin smoothing as well as brightness and background adjustment to make yourself stand out.



 Portrait



Capture subjects that stand out against a blurred background, with smooth skin tone and soft-looking hair.



 Smooth skin

Process images to make skin look smoother.



- Areas other than people's skin may be modified, depending on the shooting conditions.
- Setting details in [] mode are not applied in [] mode.

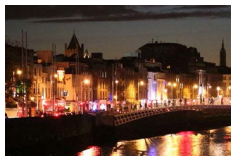


Food

Adjust color tones to make food look fresh and vibrant.



- These color tones may not look suitable when applied to people.
- In flash photography, [Color tone] changes to the standard setting.



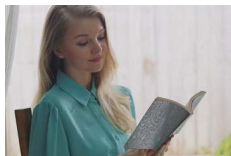
Handheld Night Scene

Take beautiful shots of evening scenes or portraits with evening scenery in the background.



- Image noise is reduced by combining consecutive shots into a single image.
- Hold the camera steady as it shoots continuously.
- There will be a delay before you can shoot again, as the camera processes and combines the images.
- Shots may look grainy because the ISO speed is increased to suit the shooting conditions.
- Excessive motion blur or certain shooting conditions may prevent you from obtaining the desired results.
- Try to keep the camera still when using the flash, because the shutter speed may be slower.





HDR Backlight Control

Three consecutive images are captured at different brightness levels each time you shoot, which are automatically combined to create a single image. This mode can reduce the loss of detail in highlights and shadows that tends to occur in shots with mixed bright and dark image areas.



- Hold the camera steady as it shoots continuously.
- Excessive motion blur or certain shooting conditions may prevent you from obtaining the desired results.
- If excessive camera shake interferes with shooting, mount the camera on a tripod or take other measures to keep it still. In this case, also disable image stabilization.
- Any subject movement will cause images to look blurry.
- There will be a delay before you can shoot again, as the camera processes and combines the images.



Fireworks

Vivid shots of fireworks.



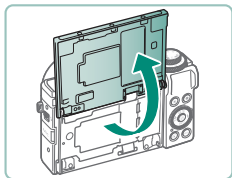
- Mount the camera on a tripod or take other measures to keep it still and prevent camera shake. Additionally, you should set [IS mode] to [Off] when using a tripod or other means to secure the camera.
- Although no frames are displayed when you press the shutter button halfway, optimal focus is still determined.



Shooting Yourself under Optimal Settings (Self Portrait Mode)

1 Choose [Self Portrait Mode].

2 Open the screen.



3 Configure the settings.

- On the screen, touch the icon of the item to configure.
- Choose an option.
- To return to the previous screen, touch [Back].

4 Shoot.



- Areas other than people's skin may be modified, depending on the shooting conditions.
- [Smooth skin effect] settings specified in [Self Portrait Mode] are not applied in [Portrait Mode].
- Set [Background blur] to [AUTO] if you have set the flash mode to [Flash] for flash photography (because the flash will not fire in modes other than [AUTO]).


Shooting Panoramas (Panorama Mode)

Create a panorama combining shots captured continuously as you move the camera one direction while holding the shutter button all the way down.



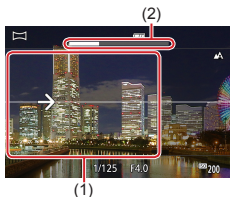
1 Choose .

2 Choose a shooting direction.

- Use the  button to choose the direction you will shoot.
- An arrow is displayed showing the direction to move the camera.

3 Press the shutter button halfway.


- Keeping the shutter button halfway down, focus on the subject.



4 Shoot.

- Holding the shutter button all the way down, move the camera at a constant speed in the direction of the arrow.
- The area displayed clearly (1) is captured.
- A shooting progress indicator (2) is displayed.
- Shooting stops when you release the shutter button, or when the progress indicator is completely white.



- In some scenes, expected images may not be saved, and images may not look as expected.
- Shooting may stop midway if you move the camera too slowly or quickly. However, the panorama created up to that point will still be saved.
- Images created from shots in  mode are large. Use a computer or other device to reduce panorama images if you will print them by inserting a memory card in a Canon printer. If panoramas are not compatible with certain software or Web services, try resizing them on a computer.
- The following subjects and scenes may not be stitched correctly.
 - Subjects that are moving
 - Subjects that are nearby
 - Scenes where the contrast varies greatly
 - Scenes with long stretches of the same color or pattern, such as the sea or sky

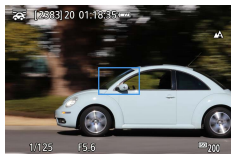




Capturing Subjects Against Flowing Backgrounds (Panning Mode)



By panning, you can blur the background to convey a sense of speed.



1 Choose [P].

2 Shoot.

- Before shooting, press the shutter button halfway as you move the camera so that it follows the subject.
- Keep the moving subject in the frame displayed, and press the shutter button all the way down.
- Even after you have pressed the shutter button fully, continue moving the camera to follow the subject.

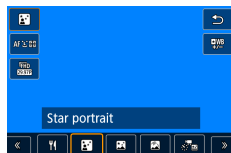


- For best results, hold the camera securely in both hands, with your elbows close to your body, and rotate your whole body to follow the subject.
- This feature is more effective for subjects moving horizontally, such as cars or trains.



Shooting People against Starry Skies (Star Portrait Mode)

Capture beautiful shots of people against starry skies. After initially firing the flash to capture the person, the camera shoots twice without flash. These three images are automatically combined to create a single image.



1 Choose [P].

- Zoom is set to maximum wide angle and cannot be adjusted.

Adjusting colors

- button → [WB] → buttons
- Fine-tuning: button → [WB] → MENU button → // buttons

2 Raise the flash.

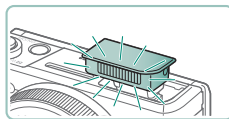
- Move the lever to raise the flash.

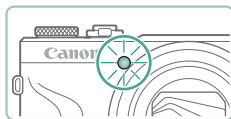
3 Secure the camera.

- Mount the camera on a tripod or take other measures to keep it still.

4 Shoot.

- Press the shutter button. The flash fires as the camera takes the first shot.
- The second and third shots are now taken, without firing the flash.





5 Have the person stay still until the lamp blinks.

- The person you are shooting should stay still until the lamp blinks after the third shot, which may take up to about two seconds.
- All the shots are combined to create a single image.





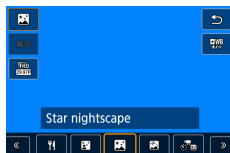
- For better shots, have the person stand away from illumination such as street lights, and make sure the flash is raised.
- There will be a delay before you can shoot again, as the camera processes the images.
- To avoid blurry shots, make sure the person you shoot stays still.
- B: blue; A: amber; M: magenta; G: green
- Skin tones remain the same when you adjust colors.
- Try setting [Night display] to [On] in this mode.
- To adjust subject brightness, try changing the flash exposure compensation.
- To adjust background brightness, try changing the exposure compensation. Note that images may not look as expected under some shooting conditions, and the person should stay still in steps 4 – 5, because shooting takes longer (up to about 15 seconds).
- To capture more stars and brighter starlight, choose [Star portrait settings] → [Star visibility] → [Prominent]. Note that images may not look as expected under some shooting conditions, and the person should stay still in steps 4 – 5, because shooting takes longer (up to about 30 seconds).
- To make stars brighter, choose [Star emphasis] → [Sharp]. To emphasize the bright stars in a starry sky, set to [Soft]. This setting can produce eye-catching shots by enlarging bright stars while de-emphasizing dimmer stars. To disable starlight processing, select [Off]. Note that in bright scenes, images are not processed to emphasize stars, even when set to [Sharp] or [Soft].





Shooting Night Scenes under Starry Skies (Star Nightscape Mode)

Capture impressive shots of starry skies above night scenes.



1 Choose [M].

- Zoom is set to maximum wide angle and cannot be adjusted.

Adjusting colors

- [SET] button → [WB] → [L/R] buttons
- Fine-tuning: [SET] button → [WB] → MENU button → [UP]/[DOWN]/[L/R] buttons

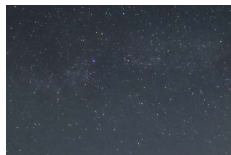
2 Secure the camera.

- Mount the camera on a tripod or take other measures to keep it still.



Adjusting the focus

- [L] button → [MF] → [SET] button
- Press the MENU button, and then tilt the camera so that the stars to capture are inside the frame displayed.
- Press the [SET] button to start adjustment.
- Adjustment may take some time, so do not move the camera until a message indicates that adjustment is complete.

3 Shoot.



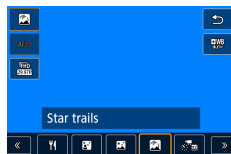


- There will be a delay before you can shoot again, as the camera processes the images.
- B: blue; A: amber; M: magenta; G: green
- Try setting  [Night display] to [On] in this mode.
- To make stars brighter, choose  [Star emphasis] → [Sharp].
To emphasize the bright stars in a starry sky, set to [Soft]. This setting can produce eye-catching shots by enlarging bright stars while de-emphasizing dimmer stars. To disable starlight processing, select [Off]. Note that in bright scenes, images are not processed to emphasize stars, even when set to [Sharp] or [Soft].
- Try switching to manual focus mode to more accurately specify the focal position before shooting.



Shooting Star Trails (Star Trails Mode)

Streaks created by the movement of stars through the sky are recorded in a single image. After determining the shutter speed and number of shots, the camera shoots continuously. A shooting session can last up to about two hours. Check the battery level in advance.




1 Choose .

- Zoom is set to maximum wide angle and cannot be adjusted.

Adjusting colors

-  button →  →  buttons
- Fine-tuning:  button →  → **MENU** button → // buttons




2 Specify the duration of the shooting session.

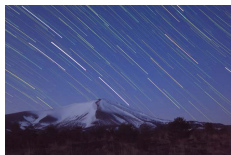
- Turn the  ring to choose the shooting duration.

3 Secure the camera.

- Mount the camera on a tripod or take other measures to keep it still.

Adjusting the focus

-  button → **[MF]** →  button
- Press the **MENU** button, and then tilt the camera so that the stars to capture are inside the frame displayed.
- Press the  button to start adjustment.
- Adjustment may take some time, so do not move the camera until a message indicates that adjustment is complete.



4 Shoot.

- Do not disturb the camera while shooting.
- To cancel shooting, press the shutter button all the way down again. Note that cancellation may take up to about 30 seconds.



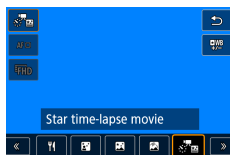
- If the camera runs out of battery power, shooting stops and a composite image created from the images up to that point is saved.
- There will be a delay before you can shoot again, as the camera processes the images.
- B: blue; A: amber; M: magenta; G: green
- Try setting [Night display] to [On] in this mode.
- Try switching to manual focus mode to more accurately specify the focal position before shooting.



Recording Movies of Star Movement (Star Time-Lapse Movie Mode)

By recording a time-lapse movie that combines images shot at a specified interval, you can create movies with fast-moving stars. You can adjust the shooting interval and recording duration as needed.

Note that each session takes time, and requires many shots. Check the battery level and memory card space in advance.



1 Choose [Star].

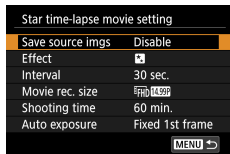
- Zoom is set to maximum wide angle and cannot be adjusted.

Adjusting colors

- [WB] button → [WB] → [Left/Right] buttons
- Fine-tuning: [WB] button → [WB] → MENU button → [Up/Down/Left/Right] buttons

2 Configure movie settings.

- [Right] button → choose an item → choose an option



3 Secure the camera.

- Mount the camera on a tripod or take other measures to keep it still.

Adjusting the focus

- [Left] button → [MF] → [WB] button
- Press the MENU button, and then tilt the camera so that the stars to capture are inside the frame displayed.
- Press the [WB] button to start adjustment.



- Adjustment may take some time, so do not move the camera until a message indicates that adjustment is complete.














4 Check the brightness.

- Press the shutter button all the way down to capture a single image.
- Switch to playback and check image brightness.
- To adjust brightness, on the shooting screen, turn the exposure compensation dial to change the exposure level, and then shoot again.


5 Start recording.

- Movie shooting button → press the shutter button all the way down
- Do not disturb the camera while recording.
- No image is shown on the camera during recording.
- To cancel recording, press the shutter button or the movie shooting button again. Note that cancellation may take up to about 30 seconds.



Items	Options	Details
Save source imgs	Disable/Enable	You can choose to save each shot collected before the movie is created. Note that when [Enable] is selected, [Effect] is not available.
Effect	    	Choose movie effects, such as star trails.
Interval	15 sec./30 sec./1 min.	Choose the interval between each shot.
Movie rec. size	    (NTSC)     (PAL)	Choose the movie recording size.
Shooting time	60 min./90 min./ 120 min./Unlimited	Choose the length of the recording session. To record until the battery runs out, choose [Unlimited].
Auto exposure	Fixed 1st frame/ Each frame	Choose whether exposure is determined by the first shot or updated for each shot.
Remote control	Disable/Enable	Choose whether to shoot with a wireless remote control.
Beep as img taken	Enable/Disable	Choose whether the camera beeps for each shot.



- You can also configure this setting by choosing  [Star time-lapse movie setting].
- Using USB Power Adapter PD-E1 (sold separately) enables you to shoot without worrying about the remaining battery level.
- Even if you specify [Unlimited] in [Shooting time], recording stops after about 8 hours, at most.





Estimated playback time based on shooting interval and frame rate (for a one-hour session)

Shot Interval	Movie Recording Size		Playback Time (Approx.)	
	NTSC	PAL	NTSC	PAL
15 sec.	FHD 14.99P, 4K 14.99P	FHD 12.50P, 4K 12.50P	16 sec.	19.2 sec.
15 sec.	FHD 29.97P, 4K 29.97P	FHD 25.00P, 4K 25.00P	8 sec.	9.6 sec.
30 sec.	FHD 14.99P, 4K 14.99P	FHD 12.50P, 4K 12.50P	8 sec.	9.6 sec.
30 sec.	FHD 29.97P, 4K 29.97P	FHD 25.00P, 4K 25.00P	4 sec.	4.8 sec.
1 min.	FHD 14.99P, 4K 14.99P	FHD 12.50P, 4K 12.50P	4 sec.	4.8 sec.
1 min.	FHD 29.97P, 4K 29.97P	FHD 25.00P, 4K 25.00P	2 sec.	2.4 sec.



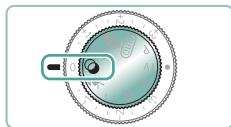
- If the camera runs out of battery power or memory card space, shooting stops and a movie created from the images up to that point is saved.
- There will be a delay before you can shoot again, as the camera processes the images.
- A shooting interval of [1 min.] is not available with these effects: , , , or .
- B: blue; A: amber; M: magenta; G: green
- Sound is not recorded.
- Try setting [Night display] to [On] in this mode.
- Try switching to manual focus mode to more accurately specify the focal position before shooting.



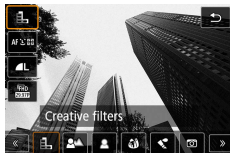




Shooting with Image Effects (Creative Filters Mode)

Add a variety of effects to images when shooting. Try taking some test shots first to make sure you obtain the desired results.



1 Enter  mode.



2  button →  → choose an option




3 Choose an effect level.

- Turn the  ring to set the level.

4 Shoot.





 Grainy B/W

Take black and white shots with a rough, gritty feeling.




 Background blur

You can shoot subjects so that they stand out from the background.



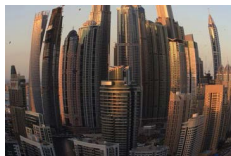
- Excessive motion blur or certain shooting conditions may prevent you from obtaining the desired results.
- For the best results with background defocusing, try shooting close to the subject, and ensure ample distance between the subject and background.
- There may be a delay after shooting before you can shoot again.



 Soft focus

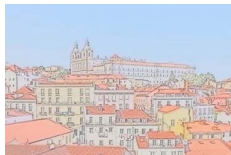
Shoot with a simulated soft focus filter effect, for a gentle ambiance.





Fish-eye effect

Shoot with the distorting effect of a fish-eye lens.



Water painting effect

Soften colors, for photos resembling watercolor paintings.



Toy camera effect

Shoot images that resemble shots from a toy camera, with vignetting and different color overall.




Miniature effect

Create the effect of a miniature model, by blurring image areas outside a selected area.





 HDR art standard


Add an effect to make shots resemble low-contrast paintings with flat tones.



 HDR art vivid


Add an effect to make shots resemble vivid illustrations.



 HDR art bold

Add an effect to make shots resemble oil paintings, with bold edges.



 HDR art embossed

Add an effect to make shots resemble faded old photos, with bold edges and dark ambiance.





HDR Art Standard, HDR Art Vivid, HDR Art Bold, and HDR Art Embossed

- This mode can reduce the washed-out highlights and loss of detail in shadows that tend to occur in high-contrast shots.
- When you press the shutter button all the way down, the camera will take three shots and combine them. Hold the camera steady as you shoot.
- Excessive motion blur or certain shooting conditions may prevent you from obtaining the desired results.
- If excessive camera shake interferes with shooting, mount the camera on a tripod or take other measures to keep it still. In this case, also disable image stabilization.
- There will be a delay before you can shoot again, as the camera processes and combines the images.

Art Bold Effect

- is not available in mode (but available in **P** mode).



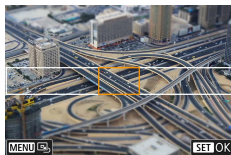
Shots Resembling Miniature Models (Miniature Effect)

1 Choose [].




2 Set the area to keep in focus (miniature effect scene frame).

- ▼ button → ▲/▼ buttons to move the frame →  button



3 Set the position in focus (AF point).

- ▲/▼/◀/▶ buttons to move the AF point →  button

4 Shoot.

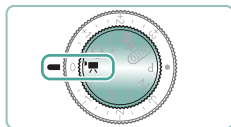


- The frame in horizontal orientation displayed when you press the ▼ button in step 2 can be changed to vertical orientation by pressing the ◀/▶ buttons.

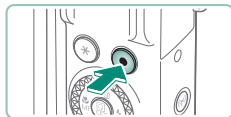


Recording a Variety of Movies (Movie Mode)

Full-featured mode offers miniature effect movies (171), video snapshots (173), time-lapse movies (175), and more.



1 Enter mode.



2 Start recording.

- [●REC] is displayed during recording.
- To stop movie recording, press the movie shooting button again.

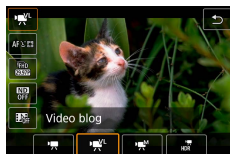


- You can also start or stop recording by touching [●]/[] on the screen.
- Black bars are displayed on the top and bottom edges of the screen in mode. The black bars indicate image areas not recorded.
- In mode, the image display area narrows and subjects are enlarged.
- Exposure can be adjusted by turning the exposure compensation dial.
- To switch between recording with auto focus and a fixed focus, touch [] on the screen or press the button before or during recording. (Auto focus is indicated by a green ○ in the upper left of the [] icon.) Note that this icon is not displayed when [Movie Servo AF] is set to [Disable].



Vlogging (Video blog recording mode)

Record in a mode designed for video blogs.



1 button → [P] → choose [P]

2 Start recording.

- Focus rapidly follows changes in the scene.

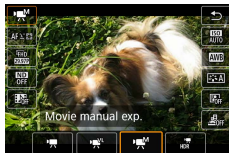


- Exposure compensation and AE lock are not available.

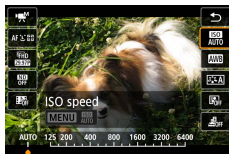


Recording Movies at Specific Shutter Speeds and Aperture Values (Movie Manual Exposure)

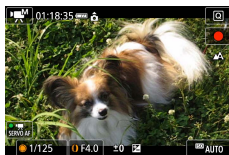
Set the shutter speed, aperture value, and ISO speed before recording.



1 button → → choose



2 Set the ISO speed → button



3 Set the shutter speed and aperture value.

- Shutter speed: dial
- Aperture value: ring

4 Start recording.



90





- Some shutter speeds may cause flickering on the screen when recording under fluorescent or LED lighting, which may be recorded.
- When the ISO speed is fixed, you can compare your specified value (where the exposure level indicator moves) to the standard exposure level by pressing the shutter button halfway. The exposure level indicator appears as [◀] or [▶] when the difference from standard exposure exceeds 3 stops.
- You can check the ISO speed in [AUTO] mode by pressing the shutter button halfway. If standard exposure cannot be obtained with your specified shutter speed and aperture value, the exposure level indicator shows the difference from standard exposure. The exposure level indicator appears as [◀] or [▶] when the difference from standard exposure exceeds 3 stops.

Recording HDR Movies

You can record high dynamic range movies that retain detail in highlights of high-contrast scenes.



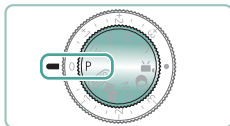
1 button → [] → choose [HDR]

2 Start recording.

Shooting in Program AE (P Mode)

Shutter speed and aperture value are automatically adjusted to suit subject brightness.

P mode offers flexibility in setting AF operation, metering modes, and several other features.




1 Enter **P** mode.

2 Configure each feature as needed.

3 Shoot.



- **P**: Program AE; AE: Auto Exposure
- If standard exposure cannot be obtained when you press the shutter button halfway, the shutter speed and aperture value blink in white. In this case, try adjusting the ISO speed or activating the flash (if subjects are dark), which may enable standard exposure.
- Movies can be recorded in **P** mode as well, by pressing the movie shooting button. However, some items on Quick Control and Menu screens may be automatically adjusted for movie recording.
- After you press the shutter button halfway, you can adjust the combination of shutter speed and aperture value by turning the  ring (Program Shift).

Shooting at Specific Shutter Speeds (Tv Mode)

Set the shutter speed before shooting. The camera automatically adjusts the aperture value to suit your shutter speed.



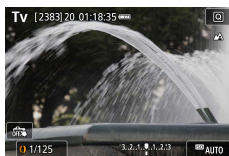
Slow



Fast



1 Enter **Tv** mode.



2 Set the shutter speed.



3 Shoot.

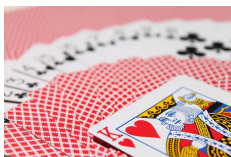


- Tv:** Time value
- We recommend deactivating image stabilization when shooting at slow shutter speeds on a tripod.
- Blinking display of the aperture value when you press the shutter button halfway indicates that the standard exposure has not been obtained. Adjust the shutter speed until the aperture value stops blinking.



Shooting at Specific Aperture Values (Av Mode)

Set the aperture value before shooting. The camera automatically adjusts the shutter speed to suit your aperture value.



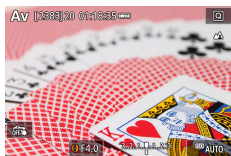
Small value



Large value



1 Enter **Av** mode.



2 Set the aperture value.

-  ring

3 Shoot.



- **Av**: Aperture value (size of the opening made by the diaphragm in the lens)
- Blinking display of the shutter speed when you press the shutter button halfway indicates that the standard exposure has not been obtained. Adjust the aperture value until the shutter speed stops blinking.





Shooting at Specific Shutter Speeds and Aperture Values (M Mode)

Set the shutter speed and aperture value before shooting to obtain the desired exposure.





1 Enter **M** mode.



2  button → **[ISO AUTO]** → set the ISO speed



3 Set the shutter speed and aperture value.

- Shutter speed:  dial
- Aperture value:  ring

4 Shoot.





- **M**: Manual
- When the ISO speed is fixed, you can compare your specified value (where the exposure level indicator moves) to the standard exposure level by pressing the shutter button halfway. The exposure level indicator appears as [◀] or [▶] when the difference from standard exposure exceeds 3 stops.
- After you set the shutter speed and aperture value, the exposure level indicator may change if you adjust the zoom or recompose the shot.
- When the ISO speed is fixed, screen brightness may change depending on your specified shutter speed and aperture value. However, screen brightness remains the same when the flash is up and the mode is set to [⚡].
- Exposure may not be as expected when the ISO speed is set to [AUTO], because the ISO speed is adjusted to ensure standard exposure relative to your specified shutter speed and aperture value.
- Image brightness may be affected by Auto Lighting Optimizer. To keep the Auto Lighting Optimizer disabled in **M** mode, add a [✓] mark to [Disable during man expo] on the Auto Lighting Optimizer setting screen.
- Calculation of standard exposure is based on the specified metering method.
- To adjust exposure when ISO speed is set to [AUTO], turn the exposure compensation dial.





Shooting Long Exposures (Bulb)




With bulb exposures, shots are exposed for as long as you hold down the shutter button.

M



1 dial → [BULB]

- Turn the  dial counterclockwise. After [30"] is displayed, the next option is [BULB].

2 Shoot.



- Shots are exposed for as long as you hold the shutter button all the way down. The elapsed exposure time is displayed during exposure.
- Mount the camera on a tripod or take other measures to keep it still and prevent camera shake. In this case, also disable image stabilization.
- When [Touch Shutter] is set to [Enable], shooting is started by touching the screen once and stopped by touching it again. Be careful not to move the camera when touching the screen.

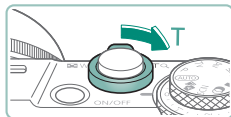




Zooming In Closer on Subjects (Digital Zoom)

When distant subjects are too far away to enlarge using the optical zoom, use digital zoom for up to about 16x enlargement.

AUTO

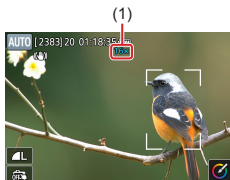


1 Move the zoom lever toward T.

- Press and hold the lever.
- Zooming stops at the largest zoom factor before the image becomes noticeably grainy, which is then indicated on the screen.

2 Press toward T again.

- The camera zooms in even closer on the subject.
- (1) is the current zoom factor.



- Using the zoom lever will show the current position on the zoom bar. The zoom bar is color-coded to indicate the zoom range.
 - White range: optical zoom range where the image will not appear grainy.
 - Yellow range: digital zoom range where the image is not noticeably grainy (ZoomPlus).
 - Blue range: digital zoom range where the image will appear grainy.
- No blue range is displayed under certain pixel count settings, and you can zoom in to the maximum level in one zoom operation.
- To deactivate digital zoom, choose [Digital zoom] → [Off].



98





Locking Image Brightness / Exposure (AE Lock)

Exposure can be locked when shooting stills and recording movies, or focus and exposure can be set separately.



Without AE lock

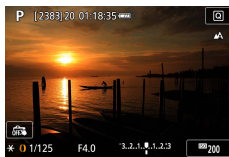


AE lock

P

1 Aim at a subject for fixed exposure.

2 Press the **[*]** button.



- **[*]** is displayed, and the exposure is locked.

- To unlock it, press the button again.

3 Compose the shot and shoot.



• AE: Auto Exposure



99

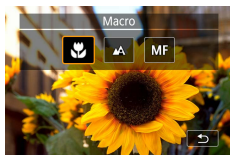




Shooting Close-Ups (Macro)

To restrict the focus to subjects at close range, set the camera to [🌻].

P



1 Press the ◀ button to choose [🌻].

2 Shoot.



- If the flash fires, vignetting may occur.
- To prevent camera shake, try mounting the camera on a tripod, pressing the ▲ button, and choosing [📷2] before shooting.



100

