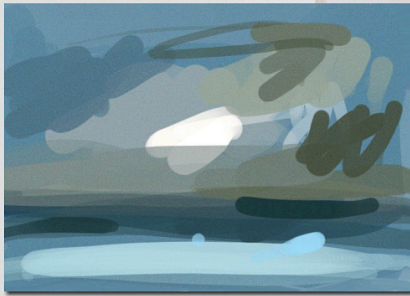


## “PAINTING WITH THE FINGERS” small tutorial



we began painting colors spots. we used the appropriate colors to the scene that we want, a stormy sky in this case.



with the finger brush we began to stomp and “move the painting



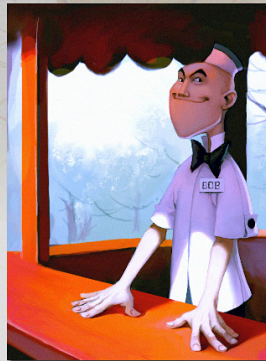
we continued giving the form to the scene. And remember, with the finger we can stomp and mark contours moving the painting



with the scattering option we do the frayed clouds forms



we polished and detailed the scene with a smaller finger brush. It is easy, right? and this “magnificent” masterpiece is finished

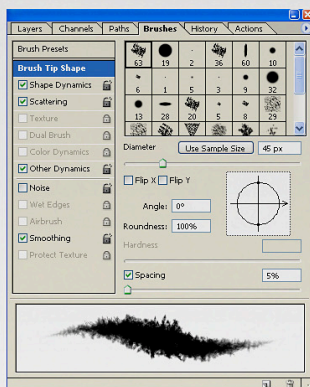


last advice: it is really important to make a color scheme before beginning

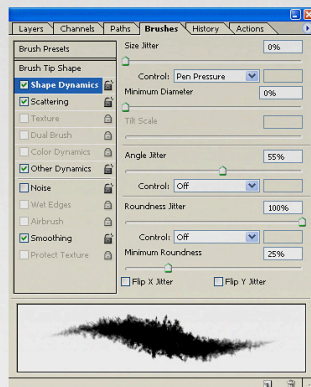


coeleptor ship color scheme

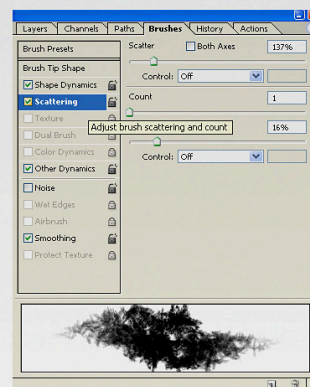
## SMUDGE TOOL BRUSH



We can make a customized brush or use a predefined one. these are the tutorial brush properties



The properties of size by pressure



With the scattering option we have a irregular brush. this is the same brush with higher parameters. The tutorial parameters is not so high, but feel free to experimentation :)